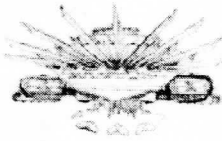


## Appendix II



### Introduction to Keylonta

#### **THE SCIENCE OF LIGHT, SOUND, THE SUB-CONSCIOUS SYMBOL CODES, AND THE BASE CODES OF MATTER**

##### ***Exploring Ultra-Micro Particle Mechanics***

Keylonta is the science of energy dynamics as they apply to a multidimensional, perpetual motion universe. It is the primary foundation upon which all advanced sciences and technologies of light, sound, frequency, and electromagnetic energy are built. Keylontic Science deals with the underlying structures of electromagnetic energy through which all matter forms are constructed and with the attributes of electro-tonal energy structure through which consciousness achieves diversification and individuation. Foundations of Keylontic Science arise out of a larger category of multidimensional scientific study known as the **Science of Vibrational Mechanics**. The Science of Vibrational Mechanics utilizes a schematic of cosmic order that is created through the inherent dynamics of fission and fusion of electro-tonal energy units, an order through which the natural laws of the cosmos are set and held in motion. Keylontic Science employs these natural laws as they apply to the structures and dynamics of energy, matter and consciousness that are created through these laws. Keylonta can be viewed as the science of creation, for it is through the dynamics of Keylontic Science that creation takes place. There *is* an organizational intelligence and sentient creative force of vast proportions that is responsible for the design and creation of the cosmos. Through Keylontic Science we can explore the dynamics of energy and consciousness through which the cosmos and all forms and beings within it, receive this design through the Central Creative Source.

The cosmic schematic is organized into a formation of two polarized Cosmic Cores and 12 Meta-Galactic Cores, both united through and existing within the Central Source of Creation. The Guardians refer to this Central Source as the Yunasai and it is the sentient, creative identity-in-energy

through and within which the cosmos and its parts manifest. The 12 Meta-Galactic Cores of the cosmos pair to form six primary reality fields in which multidimensional reality systems take place.

Each of the six pairs of reality fields contains two 15-dimensional systems, that are referred to as **15-dimensional Matrices**. In one 15-dimensional Matrix there is one set of 15 dimensions that compose the particle universe and one set of counter-rotating 15 dimensions that compose the anti-particle reflection of the parallel universe. All life, evolution and form manifestation takes place within the six 15-dimensional Matrices. The principles of energy and consciousness that form these reality fields are the same as those that manifest life forms and sentient consciousness within these fields; the same dynamics of energy inter-relationships apply to the macrocosm and the microcosm. The science of Keylonta allows us to study ourselves as interwoven integral parts of this greater structure of the cosmos.

Keylontic Science has many diverse applications from communication, healing, acceleration of the genetic code and advancement of spiritual evolution to the creation of advanced technologies such as manufacture of interdimensional transport craft and free energy devices to the maneuvering of time-space portals. Mastery of multidimensional science requires having knowledge of the minute, electro-tonal units of energy that form all particles and frequency bands within dimensional systems and the dynamics of electro-magnetism created through the interplay of these ultra-micro energy units. Consciousness and matter are both composed of these units of electro-tonal energy and so both spiritual and scientific mastery are brought together through the applied knowledge of these electro-tonal energy dynamics. Keylontic Science provides the foundations of knowledge upon which mastery of matter and consciousness can be achieved.

Keylontic Science derives its name from the word **Keylon**. A Keylon is a composite of ultra-micro electro-tonal energy units called **Partiki**. Keylons group with other Keylons to form dimensionalized, crystalline structures of energy that exist as the base morphogenetic (form-holding) templates behind and within all matter forms, particles and consciousness. Keylons compose the frequency fields of sound and light upon which the entire Cosmic matrix is structured; the Unified Field of cosmic energy is composed of groups of crystalline Keylons. Keylons also compose the morphogenetic template of electro-tonal and electromagnetic energy upon which the human DNA, genetic code, physical body, bio-energetic chakra system and multidimensional aspects of consciousness (the spiritual body) are built. In studying Keylons and the energetic dynamics inherent to Keylontic Science we can learn to consciously direct the path of our physical and spiritual evolution. Through this knowledge we can one day learn to master the contours of matter and consciousness as they apply to the simultaneously co-existing space-

time fields of the 15-dimensional Matrix, within which our present existence takes place.

To begin utilizing the potentials of Keylontic Science for personal development, we must become aware of the basic components of which our bodies, minds, consciousness and spirit are composed. Once we are aware of our personal energetic composition, we can begin to learn how to direct our inherent energy to affect desired change within the physical, emotional, mental and spiritual aspects of our existence. Keylontic Science offers us the opportunity to explore and utilize the portions of our personal reality that presently remain hidden from our conscious view. The basic principle in using Keylontic Science is to understand the mechanics by which the elements of Keylontic Science interrelate with the components of multidimensional anatomy. The first step in the study of Keylonta is becoming familiar with the six primary elements of Keylontic Science.

### **SIX PRIMARY ELEMENTS OF KEYLONTIC SCIENCE**

**1. Partiki:** Partiki represent the units of crystalline morphogenetic substance out of which particles and anti-particles emerge. Partiki are units of electro-tonal energy-identity that emanate from a central cosmic source called the **Yunasai**. Partiki are the primary units of energy that form all matter, anti-matter, pre-matter and non-matter substance. They are units of multidimensional light-sound and consciousness that represent minute projections of energy-identity from the central creative cosmic source. Partiki are the organizational intelligence and operational "life-force fuel" behind and within all manifestations and consciousness. Partiki operate as minute self-regenerating "fission-fusion generators." Through the dynamics of their interaction they create and maintain the electromagnetic fields of sound frequency and light spectra of which the cosmos is composed.

*Partiki are the smallest units of energy in the cosmos (one could find 800 billion billion Partiki units in an average 3-dimensional photon). They exist within and beyond all particle and matter structures and represent the "divine substance" out of which the cosmos is composed. Through interior polarization and replication, created through self-generated fission and fusion, Partiki manufacture two intrinsic sub-units of crystalline morphogenetic substance that serve as blueprints for rhythms of pulsation through which particles and anti-particles manifest. The Partiki sub-units that pulsate the fastest are called **Partika** and they set the pulsation rhythm through which Partiki units will group to form **anti-particles**.*

Partiki sub-units that pulsate more slowly and appear in conjunction with the Partika are called **Particum**. The Particum set the pulsation rhythm through which Partiki units will group to form **particles** that are a slower pulsating reflection of the Partika anti-particles. Together the Partiki, Partika and Particum set the foundations for particle and anti-particle manifestation

within the Unified Fields of the 15-dimensional Matrix. They are the energetic substances, through which the base electro-magnetism that keeps the universe and parallel universe in motion is manufactured.

Each Partiki perpetually breaks down into Particum and Partika, particle and anti-particle, while simultaneously replicating the original Partiki, through the act of internal fission. The replication serves to retain the pattern of the original, while the Particum and Partika serve to draw other Partiki units from the Unified Field. The Particum and Partika are then magnetically drawn back together in an act of fusion, through which they merge with the replica of the original Partiki out of which they were created. During fusion the Particum and Partika draw new energy patterns in the form of Partiki units back into the morphogenetic structure of the original Partiki, which expands the original pattern while retaining its organic integrity. Through this process crystalline composite forms are created, which serve as the morphogenetic blueprints through which individuated forms and identity will manifest.

The Partika perpetually circulate energy from the original Partiki through the Cosmic Matrix and the Particum perpetually draw energy from the Unified Field of the Cosmic Matrix back into the morphogenetic form of the Partiki, expanding its original form. Through this dynamic a perpetual motion, expanding and contracting universe and parallel universe are perpetually re-created and eternally sustained.

*Partiki can be viewed in spiritual terms as units of the identity of God, the central creative source.* All things are composed of Partiki and thus all things, beings and consciousness are intrinsically holy as they are composed of and united through the eternal substance of God. This God-substance of Partiki allows for individuation of form and identity to be created, creates diversification through a greater field of unified consciousness and manufactures the morphogenetic design through which all individuation and manifestation takes place.

**2. Partiki Grids:** Partiki units group by like polarization, electrical Partika to Partika, magnetic Particum to Particum, forming strings of energy units called **Partiki Strands**. Partiki Strands group with other such strands to form geometrical “fabrics” or grids of electro-tonal, electromagnetic energy that serve as a template of light spectra and sound tones upon which particle and anti-particle structure forms. These templates of Partiki units are called **Partiki Grids** and they form a Unified Field of living energy substance through which all things in the cosmos are energetically united.

All forms of matter and consciousness possess a Partiki Grid at the core of their individual structure that holds the morphogenetic imprint for the form or identity and the intrinsic base pattern for the particles and anti-particles that will manifest that form into matter. The personal Partiki Grid is intimately interwoven with the greater Partiki Grid of the Cosmic Unified Field.



All things are eternally, energetically connected to the energy-identity of the Yunasai/God through the electro-tonal, electromagnetic reality of the Partiki Grids. Following the pattern of organizational intelligence set by the Yunasai and carried within the Partiki units, Partiki Grids draw in more units of Partiki from the Unified Field, forming more complex geometrical arrangements of Partiki Strands which become the crystalline dimensionalized templates upon which all forms are constructed. Partiki strands represent the fibers out of which individuated morphogenetic fabrics are woven and are the second state of being between pure conscious energy-identity and manifestation of form.

*Partiki Grids represent the morphogenetic fabrics into which tapestries of crystalline matter blueprints are laid and are the third state of being between pure consciousness and manifestation of form.*

**3. Keylons:** Keylons are dimensionalized, geometrically formed Partiki composites, composed of more complex arrangements of Partiki Strands that form around the base structure of the Partiki Grids. Keylons are minute crystalline structures composed of Partiki that form the dimensionality of consciousness and matter. Keylons and the Partiki within them are the “building blocks of frequency” or sound tones, which are the core structures upon which matter and consciousness are built. Keylons direct the rhythm of expansion-projection and contraction-retraction of Partiki units throughout the cosmos and within the Partiki Grids of all forms. They set the foundation structures upon which biology and the perception of space, time and matter are built. Partiki units set the base electromagnetic fields through which dimensionalization takes place and Keylons direct the contours of how Partiki units will build up into form within those electromagnetic fields. Keylons form the crystalline matrix of electro-tonal energy that runs through all things.

*Keylons represent the primary tapestries of crystalline morphogenetic matter blueprints upon which sub. particle and sub-anti-particle pre-matter substance will form. Keylons are the fourth step between pure consciousness and form manifestation.*

**4. Keylon Codes:** A Keylon Code is a complex grouping of Keylons that further direct the contours of energy upon which forms are built. Keylon Codes serve to direct the in-flow and out-flow of Partiki unit energy within the morphogenetic blueprint of a form into more specific patterns, rhythms of movement and electro-tonal vibration. All forms of matter and consciousness are structured upon specific sets of Keylon Codes that determine the base atomic and genetic makeup of a form and the characteristics of consciousness the form will possess. Keylon Codes represent complex patterns of interwoven sound tones and light spectra that form compound morphogenetic crystalline structures that serve as the templates of living light and sound to

## Introduction to Keylonta

which pre-matter sub-particles and matter and anti-matter particles will adhere.

Keylon Codes create and hold together the primary morphogenetic structure of individuated form; they are the primary structure and organizational collective intelligence within all things. The manifest attributes of all matter forms and consciousness can be affected through directed alteration of existing Keylon Code structures.

*Keylon Codes represent the compound tapestries of crystalline morphogenetic matter blueprints upon which pre-matter, anti-matter and matter particles will form. They are the fifth state of being between pure consciousness and form manifestation and serve as the complex, multidimensional, morphogenetic blueprint through which all individuated forms manifest.*

**5. The Crystal Body:** This term is used to refer to the multidimensional Keylon Code structure of a matter form or form of consciousness. The Crystal Body represents the individuated morphogenetic construction of a form through which the contours of its manifest attributes will take shape. The morphogenetic Crystal Body sets the manifest characteristics a form will possess, its intrinsic sub-atomic structure, body rhythms, metabolic rate and the foundations of DNA, the manner in which Partiki units will move through the form and the type of conscious awareness the form will embody. The human Crystal Body encompasses 12 dimensions of identity, sound frequency and light spectra and sets the structure for the bio-energetic chakra system, auric field and electromagnetic Merkaba Fields (counter-rotating spirals of multidimensional electromagnetic energy through which the auric field is formed).

*The Crystal Body represents the collective fifth state of being between pure consciousness and form manifestation, in relation to an individuated construction of consciousness or matter. Through the Crystal Body the electromagnetic Merkaba Fields of a form are designed and constructed.*

*The Merkaba Fields represent the sixth state of being between pure consciousness and form manifestation. Through the counter rotating electromagnetic fields of the Merkaba Fields the contours for the bio-energetic auric field and chakra system are formed in accordance with the design set by the Crystal Body.*

*The bio-energetic auric field and chakra systems represent the seventh state of being between consciousness and manifestation. The bio-energetic field then serves to direct Partiki units from the Dimensional Unified Fields into particle or anti-particle construction through which the DNA and biological particle base of a form is set in to the dimensional framework. Through the bio-energetic system the pre-matter construction of a biological form is created. This pre-matter construction is referred to as the **Nadis** and **Nadial Capsule**. The Nadial Capsule separates the levels of the auric field and the identity into 3-dimensional divisions and the Nadis serve as a system of minute pre-*

matter channels through which Partiki unit energy from the auric field flows into the particle manifestation of the body.

*The Nadis and Nadial Capsule represent the eighth state of being between consciousness and manifestation. The particle and anti-particle construction which builds up through the pre-matter Nadis into a form's manifest particles or anti-particles following the design set by the Crystal Body, represent the ninth state of being between consciousness and manifestation.* The multidimensional spiritual body of the Soul Matrix and Over-Soul Matrix are part of the individuated morphogenetic Crystal Body of humans, and these aspects of Eternal identity are composed of Keylon Codes, Keylons and Partiki units, just as the physical body is composed of these substances. The Crystal Body serves as the underlying structure of all matter and consciousness, connects the physical aspects of being and identity to the multidimensional Soul and Over-Soul Matrices and connects each individuated form to the greater Crystal Body of the Cosmic Unified Field. Through directed interaction with the morphogenetic Crystal Body both genetic and spiritual aspects of human evolution can be expanded and accelerated.

**6. Light-symbol Codes:** A Light-Symbol Code is a pattern of electrotonal energy composed of specific Partiki configurations that make up frequencies of sound and spectra of light. These patterns of light and sound direct the speed, angles of interface and patterns of refraction and replication that Partiki units will follow within the Keylon Code structure of the Crystal Body. Light-Symbol Codes control the way energy will move and manifest within a form; they serve as the organizational "program" within all Keylons. By altering the Light-Symbol Code program within the Keylon Codes of the morphogenetic Crystal Body, the structure of the Keylon Codes and thus the manifestations they create can be changed.

Human evolution of body and consciousness can be accelerated by activating certain Light-Symbol Codes that are presently dormant within the Keylon Code structure of the Crystal Body. Once activated these dormant Light-Symbol Codes direct the morphogenetic Crystal Body, bioenergetic auric field and chakra system and DNA to operate in new ways. Light-Symbol Codes direct sound tones and light spectra within the contours of the Crystal Body. This directive serves to control the relationships between Partiki units in the Crystal Body, which translates into operational instructions for the bio-energetic system and DNA to follow. Light-Symbol Codes can be used to direct patterns of frequency into the bio-energetic field and DNA in very specific ways that will allow dormant potentials of the DNA to come into operation. The DNA directs the manifest functions of the physical body and the physically embodied consciousness, following the design set by the Light-Symbol Code program within the Crystal Body.

Cellular Transmutation can be achieved by adding new frequency patterns into the Crystal Body by changing the program of the Light-Symbol

Codes to hold the new frequency patterns. The use of internal and external sound frequencies, light spectra and electromagnetic emanations creates hidden Light-Symbol Codes within the Crystal Body, which can program the body toward health and wellness or disease and deterioration. The mind can be used to direct specific Light-Symbol Codes and the electro-tonal programs they carry into the Crystal Body to create healing, expansion of the genetic code and conscious awareness and acceleration of multidimensional physical and spiritual evolution. Through conscious direction of the Light-Symbol Code programs the body can be freed from its present space-time orientation by altering the particle pulsation rhythms of the body's dimensional particle base, once the genetic code has been expanded.

Keylontic Science employs knowledge of the interrelationships between these six primary elements to integrate the aspects of multidimensional identity and to create positive change and acceleration of evolution for all life forms in the cosmos. Keylonta is also used to create tactile technologies that assist in harmonious evolutionary progression. Keylontic Science is the study of morphogenetic fields and the processes by and through which consciousness becomes manifest. ***Units of identity from the central creative source move through and build themselves up within the following states of being, to become manifest forms and individuated identities as they evolve within the 15-dimensional system:***

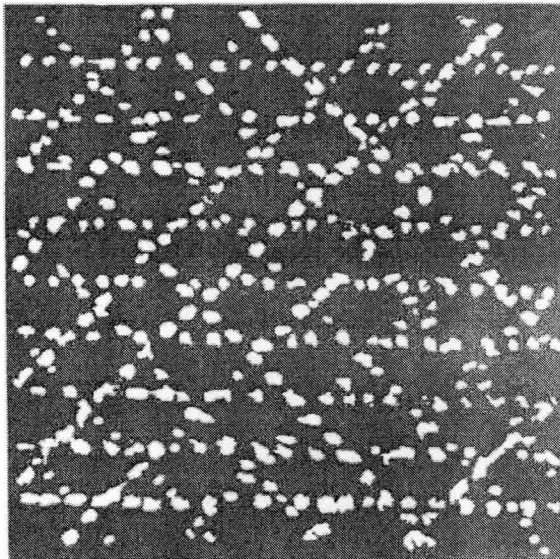
1. Morphogenetic Partiki Units of pure undifferentiated consciousness,
2. Morphogenetic Partiki Strands,
3. Morphogenetic Partiki Grids,
4. Morphogenetic Keylons,
5. Keylon Code Crystal Body composite morphogenetic fields,
6. Electromagnetic Merkaba Fields,
7. Bio-energetic fields and chakra systems,
8. Pre-matter Nadial substance,
9. Particle and Anti-particle construction,
10. Simple to complex matter and anti-matter forms, elemental composites, biological life-forms and sentient conscious identity and
11. Expanded compound morphogenetic identities of pure sentient consciousness, possessing complex 15-dimensional Crystal Body structures. Keylontic Science studies and implements the natural laws and dynamics inherent to the creation of matter and the evolution of consciousness.

The Science of Keylonta can be viewed as the science of Light and Sound (electro-tonal units of Partiki), the Sub-conscious Symbol Codes (Light-Symbol Codes that program the Crystal Body and operate on a sub-conscious level) and the Base Codes of Matter (the crystalline Keylon Codes



### *Six Primary Elements of Keylontic Science*

that make up the morphogenetic Crystal Body and form the basis of all structure). *In simple terms Keylonta is the science of Creation and Consciousness, through which mastery of mind and matter can be achieved and by which spiritual integration and reunion with our creative Source is accomplished.* The dynamics of Keylonta continually operate within every human being and connect each human to everything in the cosmos, regardless of whether humanity is conscious of this process. The science of Keylonta allows humans to become conscious co-creators within the multidimensional reality fields of the cosmos. Keylonta is the scientific reality behind all of the sacred practices of religions and mystical traditions. It represents the place where science meets its soul and religion acknowledges the dynamics of energetic reality inherent to spirit. Keylonta is the science of the future and of the ancient past, reaching backward and forward through time to help humanity rediscover sovereignty over its being today.



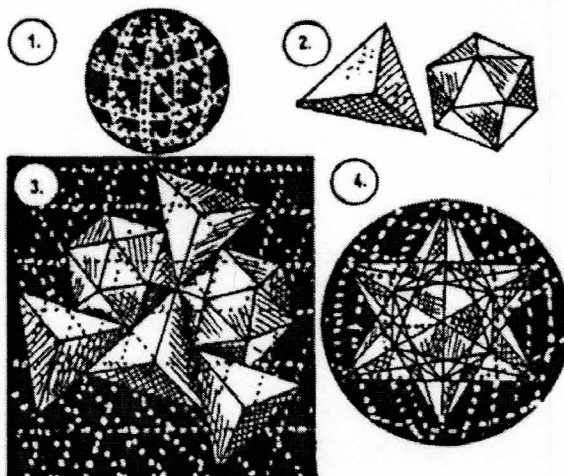
#### ***Example of a Partiki Grid***

“Lines of Light,” composed of minute, electro-tonal Partiki strands cross over and through each other, creating a myriad of geometrical forms that serve as a “fabric of light and sound,” or **Partiki Grid**. The Partiki Grid serves as a “collector” of Partiki units, pulling in new Partiki. As Partiki units build up within the Partiki grid, they begin to form more complex structures of electro-tonal impulse that become imbedded in the grid

as crystalline Keylon configurations, or **Keylon Codes**. The Keylon codes set and hold the structure for all manifestations of matter, pre-matter, anti-matter and energy fields. *Partiki Grids create* **the Unified Field of Energy and Consciousness**, within which all things in the dimensionalized universe reside and Keylon Codes create individuation of form and consciousness within the Unified Field. Keylon Codes direct the patterns of Partiki fission/fusion and the patterns of refraction and replication of electro-tonal energy that allow for differentiation of form and consciousness within the unified Partiki grid of **the Cosmic Matrix**.

## Introduction to Keylonta

1. Example of a **Partiki Grid** of a sphere.
2. Examples of crystalline **Keylons**.
3. Example of a group of Keylons forming the more complex pattern of a **Keylon Code**.
4. Examples of a **Keylon Code** within the **Partiki Grid** of a sphere. The

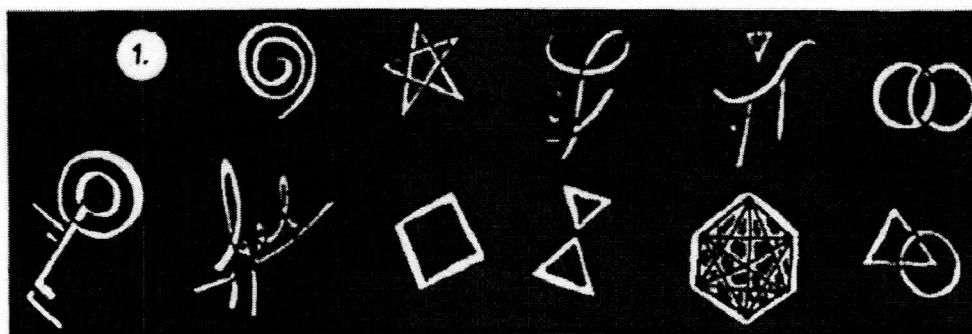


Keylon Code directs the refraction of electro-tonal energy, the timing of Partiki fission and fusion, the angular relationships

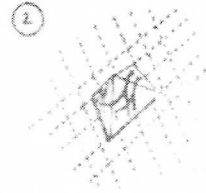
between Partiki strands and the way energy will move through the Partiki Grid of the sphere from the Partiki Grid of the Unified Field around it. *All forms are built upon a "Crystal Body" of Keylon Codes.*

**Light-Symbol Codes** are used to program/direct the angles of Partiki strand refraction within the Keylon code structures of a Partiki grid. They direct the intervals at which fission and fusion within Partiki units will take place and the way energy will move through the Keylon codes and Partiki grid. In directing specific symbols of light in one dimension, you are directing sound frequencies in the dimension above. Partiki grids and Keylon codes must be programmed from the dimension above that in which they are placed. This is done by using light in one dimension to direct the appropriate sound frequencies in the dimension above.

1. Examples of Light-Symbol Codes.  
Partiki refraction patterns



2. A Light-symbol code program entered into a Keylon code within a Partiki grid



## WELCOME TO THE FIFTH WORLD

Many tribal cultures throughout our recent history have shared a rich tradition of prophecy regarding the transitions Earth will encounter during its 2017 ascension cycle. Prophecies of events to come during this period have been interwoven with race creation stories and mythologies for over 26,556 years. Though the Bridge Zone Project is a new addition to the roster of events soon scheduled to occur, intuitive knowledge of the ascension cycle period and the close of the 26,556-year Euiago time cycle has remained alive within numerous cultures of Earth for thousands of years. This hidden knowledge has shown itself within the Biblical prophecies of Revelations; it was the foundation for many rites of passage among the Essenes and other historical mystical societies.

Reference to this ascension cycle can be found within the calculations of the Mayan calendar and inscriptions within the ancient Egyptian pyramids and this knowledge has played a major role within the rich tapestry of Native American oral tradition. The knowledge that Earth and the human race would face something monumental during the “end times” has been the comprehension of visionaries throughout the course of recorded history. The “end times” represent the point in Earth’s evolution when the planet has completed a cycle of 26,556 years and moves forward through its ascension period to begin a new cycle.

Our upcoming “end times” hold a promise not present during the end times of past 26,566-year cycles, for this is the first time the planetary grid will vibrate high enough to allow planetary dimensional ascension to take place. This opportunity has not been available on Earth for over 200,000 years. The Bridge Zone Project is made possible precisely because Earth is approaching the end of its present time cycle. If it were not for the Bridge Zone Project, Earth would once again be unable to fulfill the promise of ascension, as without guardian intervention Earth’s grid would not have reached the necessary level of vibration. The planet would have remained within the HU-1 dimensions for another 26,566-year cycle. The new cycle would have reached an early close with the destruction of Earth before the next ascension period occurred.

## *Introduction to Keylonta*

In many Native American traditions, the coming "end times" ascension cycle period is viewed as a transition from what is known as the **Fourth World to the Fifth World**. The transition is perceived in relation to a much longer cycle of history in which humanity evolved through three previous "worlds," or time periods marked by advanced civilization and high technological achievement. Contemporary historical analysis does not yet include these hidden aspects of human evolution. The truth of humanity's lost past has remained protected through cultures living more closely in harmony with the Earth's natural cycles. We are indeed now approaching the Fifth World.

**WORLD ONE: 560,000,000—550,750,000 years ago.** The Alania and Lumia of Tara, before the fall to HU-1.

**WORLD TWO: 250,000,000—25,000,000 years ago.** The five Cloister Races of the 12 Tribes seeded on Parallel Earth.

**WORLD THREE: 25,000,000—5,500,000 years ago.** The First Seeding of the 12 Tribes on Earth. The five Cloister Races and Root Race Three: Lumanians and Four: Alanians. Ended via Electric Wars.

**WORLD FOUR: 3,700,000 years ago to present.** The Second Seeding 3,700,000—848,000 years ago, Root Races Three: Lamanians, Four: Atlanians and Five: Ayrians and their Cloister Races. Ended via The Thousand-Year War. The Third Seeding 75,000 years ago to present, Root Races Three: Lemurians, Four: Atlanteans and Five: Aryans and their Cloisters.

### **Welcome to the Fifth World!**

Between 5/5/2000-2017 Earth will make its transition from the present Fourth World of the D-3 time cycle, into the Fifth World of the Bridge Zone and Taran ascension time cycles. Due to the Guardians' Bridge Zone Project, the cataclysmic events originally associated with the "end times" prophecies have been largely avoided. Though there may still be warfare and geographical changes in some areas, the scale of these events will be much smaller than those foretold through ancient prophecies. There will indeed be a "cleansing," as predicted by some Native American traditions. As the Earth separates into higher and lower vibrating particle bases, Bridge Zone Earth and Phantom Earth each will be "cleansed" of the other. Populations of the Bridge Zone Earth will rise to face a new dawn of evolution within the new Fifth World of enlightenment, progress and achievement. Those on Phantom Earth will not make this transition and will remain within the digressing Fourth World evolutionary cycle of a Descending Planet in the D-3 time continuum.